



**RECREATION**  
SERIES

# **KEGEL** NAVIGATION PATTERNS





### STONE STREET 9642

Like Wall Street, the area to play this pattern is very defined but its prime location is just outside a couple boards from its travel companion.

Some might refer to this pattern as a "Stone Wall" since it fits into USBC's Red pattern category.

#### Latitude Ratio Coordinates

22' 9.6 to 1

40' 4.1 to 1

#### Longitude Ratio Coordinates

Outside Taper 1.7 to 1

Inside Taper 3.7 to 1

#### Pattern Distance

42 Feet

#### Pattern Volume

Forward 11.50 mL

Reverse 11.65 mL

Total 23.15 mL



# KEGEL NAVIGATION PATTERNS

## RECREATION SERIES



### STONE STREET 9642

#### Latitude Ratio Coordinates

22' 9.6 to 1  
40' 4.1 to 1

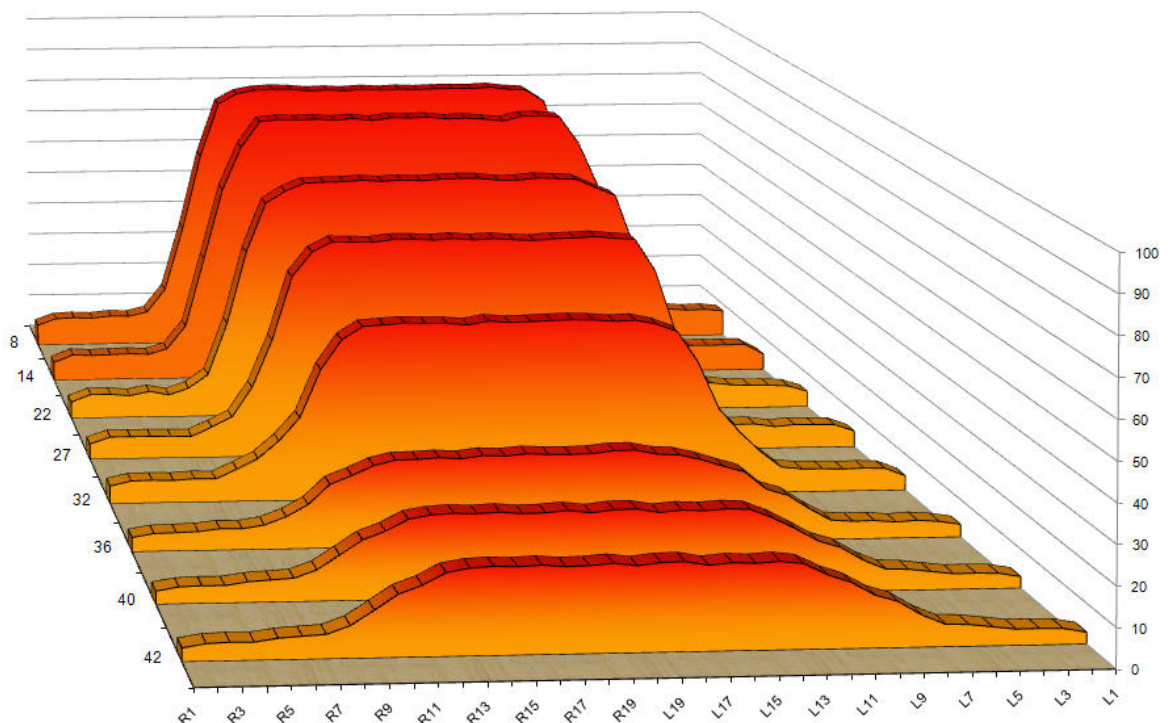
The 2D chart below was generated by Lane Monitor showing select tapes and ratios at key distances throughout the pattern. USBC Sport Bowling ratios are calculated at 22' and 2' before the end of the pattern. All Latitude Ratio Coordinates are calculated from these two distances.

Latitude ratios in the last half of the pattern can be an indicator of the difficulty of a pattern. Generally, the lower the ratios down lane, the more difficult the pattern.

#### Longitude Ratio Coordinates

Outside Taper 1.7 to 1  
Inside Taper 3.7 to 1

The 2D chart below was generated by taking tapes every foot of the pattern. This gives a visual of how the conditioner tapers off from the front to the end of the pattern.





# KEGEL NAVIGATION PATTERNS

## RECREATION SERIES



### STONE STREET 9642

#### Kegel Sanction Technology™ Lane Machine Settings

Oil per Board (Pump Setting): 50  $\mu$ L

Pattern Distance: 42 feet

Reverse Drop Brush: 42 feet

Forward Settings										
Screen #	Left End of Stream	Right End of Stream	# Loads or Streams	Travel Speed (in/sec)	Beginning Distance of Load (feet)	Ending Distance of Load (feet)	# Boards Crossed per Load	Total Boards Crossed	Total Volume of Oil ( $\mu$ L)	
01F	2	2	2	14.00	0.00	1.90	37	74	3700	
02F	9	9	1	14.00	1.90	3.80	23	23	1150	
03F	10	10	2	18.00	3.80	8.90	21	42	2100	
04F	11	11	3	18.00	8.90	16.50	19	57	2850	
05F	12	12	2	18.00	16.50	21.60	17	34	1700	
06F	2	2	0	18.00	21.60	34.00	0	0	0	
07F	2	2	0	26.00	34.00	38.00	0	0	0	
08F	2	2	0	30.00	38.00	42.00	0		0	
09F										
Forward Buff Screens: 3			Forward # Boards Crossed   Volume mL					230	11.50	
Reverse Settings										
Screen #	Left End of Stream	Right End of Stream	# Loads or Streams	Travel Speed (in/sec)	Beginning Distance of Load (feet)	Ending Distance of Load (feet)	# Boards Crossed per Load	Total Boards Crossed	Total Volume of Oil ( $\mu$ L)	
01R	2	2	0	30.00		35.00				
02R	12	12	1	18.00	35.00	32.50	17	17	850	
03R	11	11	2	18.00	32.50	27.40	19	38	1900	
04R	10	10	4	18.00	27.40	17.20	21	84	4200	
05R	9	9	3	18.00	17.20	9.60	23	69	3450	
06R	8	8	1	14.00	9.60	7.70	25	25	1250	
07R	2	2	0	10.00	7.70	0.00	0	0	0	
08R										
09R										
Reverse # Boards Crossed   Volume mL								233	11.65	
Forward plus Reverse Boards Crossed   Volume mL								463	23.15	





# KEGEL NAVIGATION PATTERNS

## RECREATION SERIES



### STONE STREET 9642

The charts on this page are generated by Kegel's KOSI software from the lane machine program sheet.

The **OVERHEAD CHART** on the right shows where the conditioner is applied on both the forward and reverse screens. The gradient area is a calculation of how the conditioner might bleed off the buffer brush.

The **COMPOSITE GRAPH** below shows the total amount of conditioner applied to every board. A good way to think about this graph is to envision all the conditioner on the lane being pushed back to the foul line. Once all the conditioner is stacked up, this is what it would look like.

